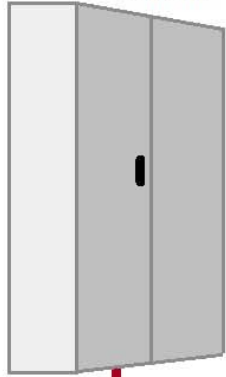
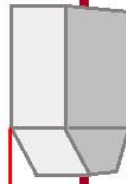


Min. Raumhöhe 2,00 m

Zählerschrank
Strom

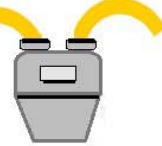


Netzanschluss
Strom

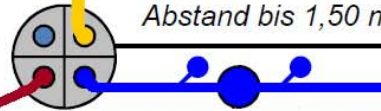


Lichter
Abstand
min.
0,30m

Gaszähler



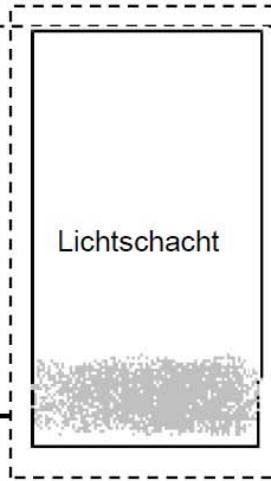
Abstand bis 1,50 m*



Wasserzählerstrecke

* WZ: Qn 2,5 = 1,00 m
WZ: Qn 6,0 = 1,50 m

Lichtschacht



Geländeoberkante

Lichter
Abstand
min.
0,30m

Kanal

1,20m

1,20m

Freier Arbeits- und Bedienraum vor
den Hausanschlusseinrichtungen